

# REASONS

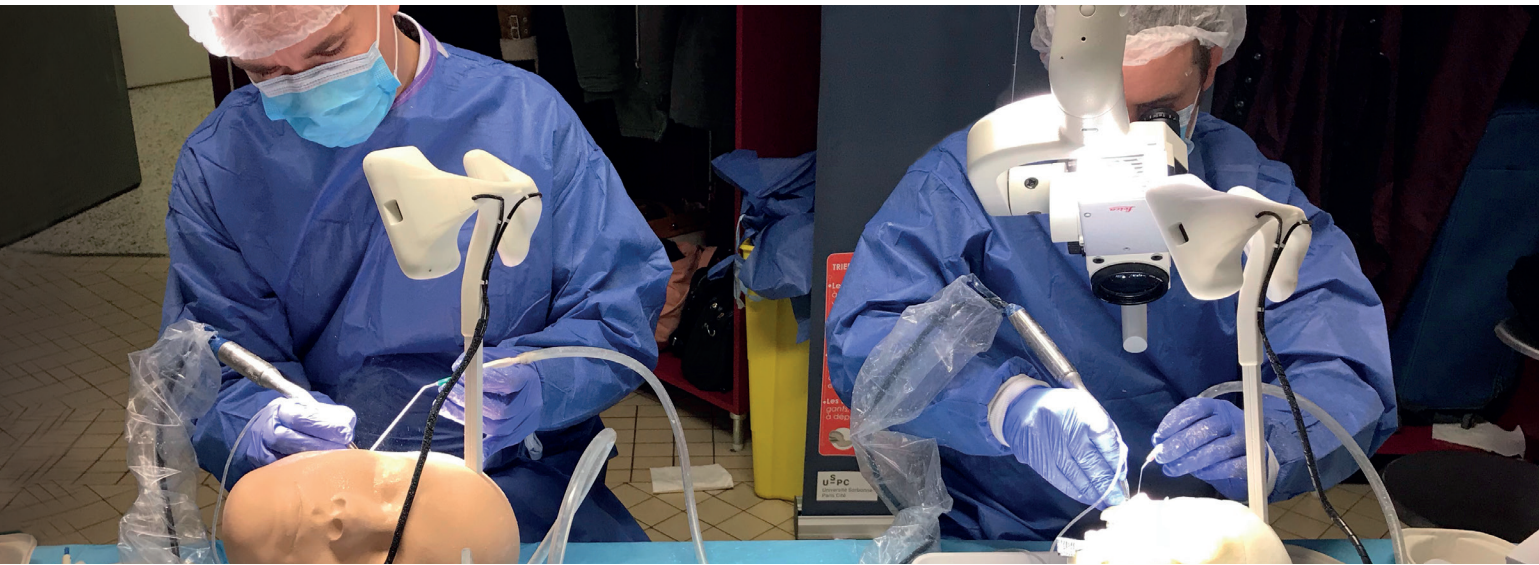
FOR A PHACON TRAINER

## /// PHACON TEMPORAL BONE CONCEPT

Realistic anatomical models combine the PHACON bone like material with various soft tissues. All structures and landmarks are based on real patients CT data. Useable with your common devices, instruments and implants, with realistic haptic and feel. Navigation within the included CT data set of the related model and in the anatomical 3D rendered model. Evaluate your training objectively.

## /// VARIOUS ANATOMIES AND PATHOLOGIES

PHACON provide a variety of different temporal bone patients with various ages and specific pathologies. The different patients contain numerous anatomical structures depending on your need and course topics. Choose the Temporal Bone Patient you would like to make your training. Our products are anatomically correct within 16 microns.



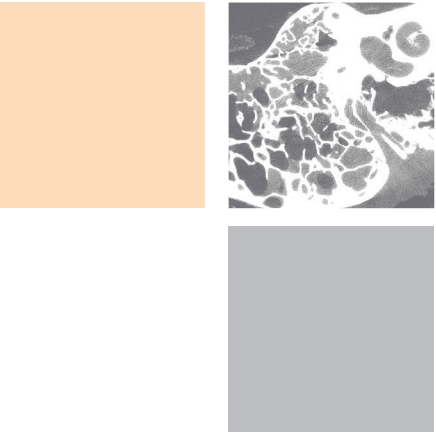
## /// MARKETING AND EDUCATION

Present your medical instruments at conferences and exhibitions for customers and internal training. Our PHACON anatomical patients allow you to explain the functions and features in a realistic context. Together we can find the right solutions for your needs.

## /// ACCESSABLE QUANTITIES ANYTIME

PHACON has a serial production of thousands of parts, even as small as the ossicles. All parts and products are produced and manufactured in Germany and updated routinely. Organise your course structure independent from location. Our cost effective patients are available in all quantities anytime.

VIRTUAL ASSISTANCE /// EFFECTIVE MARKETING TOOL /// REALISTIC MODELS /// ANATOMICAL ACCURACY /// SENSOR TECHNOLOGY /// REALISTIC HAPTIC /// HANDMADE /// TIME-INDEPENDENT/// POSITION OF OWN INSTRUMENTS /// LOCATION-INDEPENDENT



# THE PATIENTS FOR YOUR SURGICAL DEMONSTRATION AND EDUCATION

## TEMPORAL BONE

### EUROPE

**PHACON GmbH**  
Druckereistrasse 11  
04159 Leipzig  
Germany

[www.phacon.de](http://www.phacon.de)

Phone: +49. (0)3 41. 47 83 97 32  
Fax: +49. (0)3 41. 47 83 91 74  
Mail: [info@phacon.de](mailto:info@phacon.de)

### USA

**PHACON Inc.**  
4470 Chamblee-Dunwoody Rd. /// Suite 463  
Dunwoody /// GA 30338 /// USA

[www.phacon.us](http://www.phacon.us)

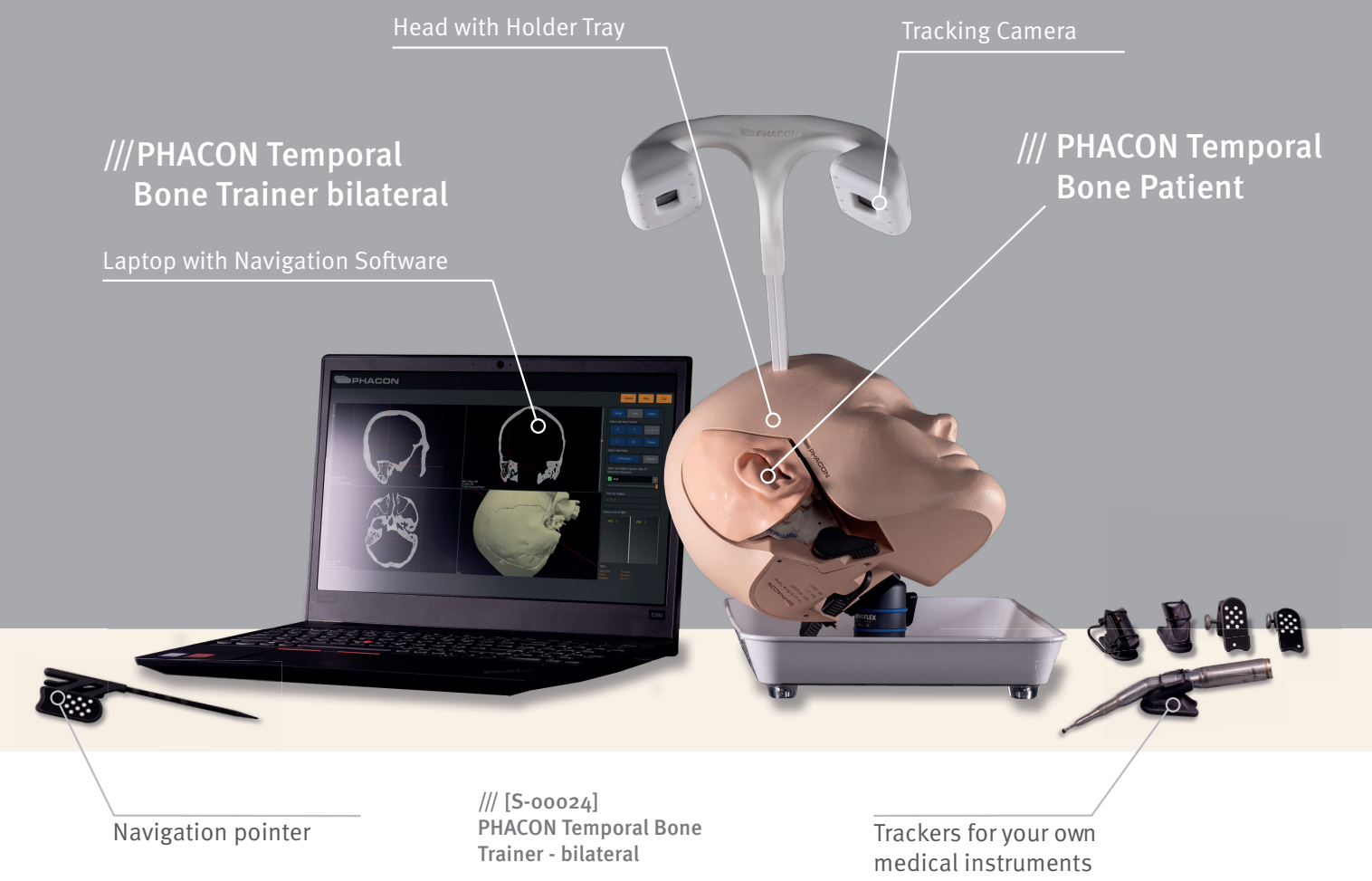
Phone: 1-833-2 PHACON  
- 2 742266  
Fax: 470-243-0494  
Mail: [info@phacon.us](mailto:info@phacon.us)



# TEMPORAL BONE TRAINER

## PERFORM YOUR SURGICAL TRAINING UNDER REALISTIC CONDITIONS

The PHACON Temporal Bone Trainer bilateral offers the possibility to train various ear surgeries left and right side under realistic conditions. Use your regular instruments in your training. The related CT/MRI data of the PHACON Temporal Bone Patient is shown in the PHACON navigation software. Navigate your own instruments with the supplied trackers. Injuries to specific risk structures are detected and evaluated automatically.



DISCOVER THE INTRODUCTION  
IN OUR PHACON TRAINER



ORDER YOUR PHACON  
TEMPORAL BONE TRAINER

# VARIANTS

## THE RIGHT PRODUCT FOR YOUR NEEDS

PHACON provides a variety of different products and training options to fit your needs. Depending on your course setup or presentation, together we can find the right solutions to make your marketing and training the most successfull event.



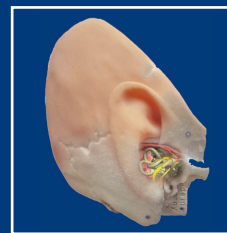
### THE PATIENTS AND THE TRAINER ARE USED FOR THE TRAINING OF:

- Mastoidectomy
- Cochleostomy
- Insertion of an electrode into the scala tympani
- Preparing implant beds for bone conduction implants
- Placing middle ear implant systems to the ossicles
- and more...

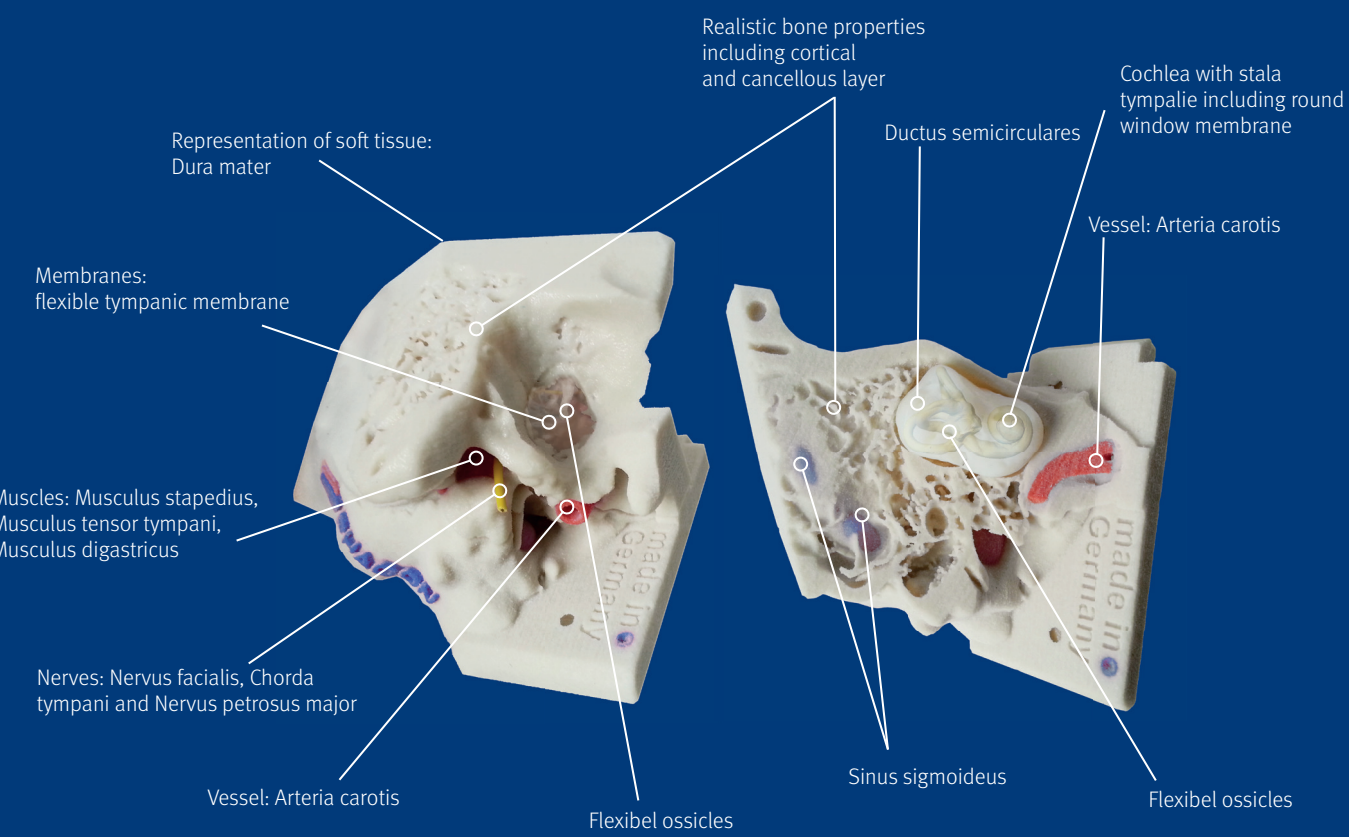
# VARIANTS OF TEMPORAL BONE PATIENTS

## PROPERTIES

artificial periosteum and scalp /// tympanic membrane /// n. petrosus major /// musculus stapedius /// flexible ossicles /// round window membrane /// pneumatized bone /// ductus simicularis /// facial nerve /// skin in the auditory canal /// chorda tympani /// flexible dura and nerves /// predrilled /// transparent cochlea /// sinus sigmoideus /// arteria carotis ///dura /// vena jugularis /// pneumatized bone /// skin /// and others  
**available with** detectable risk structures, atresia, for cochlea implantation, placing middle ear implants, inserting electrodes, mastoidectomy, cochleostomy, for preparation of an implant bed



Optional with realistic skin cover



## THE DIFFERENT AGES OF THE PHACON TEMPORAL BONE PATIENTS

<b>PATIENT "KLEIN" CHARACTERISTICS</b> Age 1 Year /// Anatomy: one year anatomy	<b>PATIENT "SCHNEIDER" CHARACTERISTICS</b> Age 6 Years /// Anatomy: standard anatomy
<b>PATIENT "WAGNER" CHARACTERISTICS</b> Age 2,5 Years /// Anatomy: standard anatomy	<b>PATIENT "KOHL" CHARACTERISTICS</b> Age 18 Years /// Anatomy: pathology hypoplasia of the cochlea
<b>PATIENT "WINKLER" CHARACTERISTICS</b> Age 4 Years /// Anatomy: pathology external auditory cana atresia	<b>PATIENT "SCHMIDT" CHARACTERISTICS</b> Age 55 Years /// Anatomy: standard anatomy



ORDER YOUR PHACON  
TEMPORAL BONE PATIENTS

Electrical detection enables the detection of injuries of risk structures within the connected PHACON Trainer. When injured, an optic and acoustic signal appears in the navigation software.