

REASONS

FOR A PHACON TRAINER

/// PHACON CONCEPT SINUS Patient

Realistic anatomical patient combine the PHACON bone like material with various soft tissues. All structures and landmarks are based on real patients CT data. The Sinus patient is usable with your common devices, instruments and implants, with realistic haptic and feel. Navigation within the included CT data set of the related model and in the anatomical 3D rendered model. Evaluate your training objectively.

/// VARIOUS ANATOMIES AND PATHOLOGIES

PHACON offers a variety of different anatomies of diverse ages and also diverse pathologies. The various patient contain different anatomical structures depending on your needs and course topics. Inside the sinus patient we can place polyps of particular sizes and quantities. Since our patient are based on CT data and most parts are 3D printed, we can produce our patient with an accuracy of 16 microns.

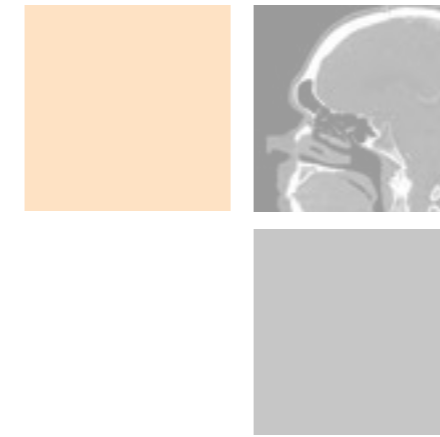


/// MARKETING AND EDUCATION

Presenting your medical instruments at conferences and exhibitions for customers and internal training. Our PHACON anatomical patient allow you to explain the functions and features in a realistic context. Together we can find the right solutions for your needs.

/// ACCESSIBLE QUANTITIES ANYTIME

PHACON has a series production of thousands of parts in which we combine bone material with soft mucosa tissue. All parts and products are produced and manufactured in Germany and updated routinely. Organize your course structure independent from location. Our patient are available in all quantities anytime.



PHACON

THE PATIENTS FOR YOUR SURGICAL DEMONSTRATION AND EDUCATION

SINUS

EUROPE & ALL OTHER COUNTRIES

PHACON GmbH
Druckereistrasse 11
04159 Leipzig
Germany

www.phacon.de

Phone: +49. (0)3 41. 47 83 97 32
Fax: +49. (0)3 41. 47 83 91 74
Mail: info@phacon.de

USA

PHACON Inc.
4470 Chamblee-Dunwoody Rd. /// Suite 463
Dunwoody /// GA 30338 /// USA

www.phacon.us

Phone: 1-833-2 PHACON
- 2 742266
Fax: 470-243-0494
Mail: info@phacon.us

VIRTUAL ASSISTANCE /// EFFECTIVE MARKETING TOOL /// REALISTIC PATIENT ///
ANATOMICAL ACCURACY /// SENSOR TECHNOLOGY /// REALISTIC HAPTICAL /// HAND-
MADE /// TIME-SAVING /// POSITION OF OWN INSTRUMENTS /// INDEPENDENT LOCATION

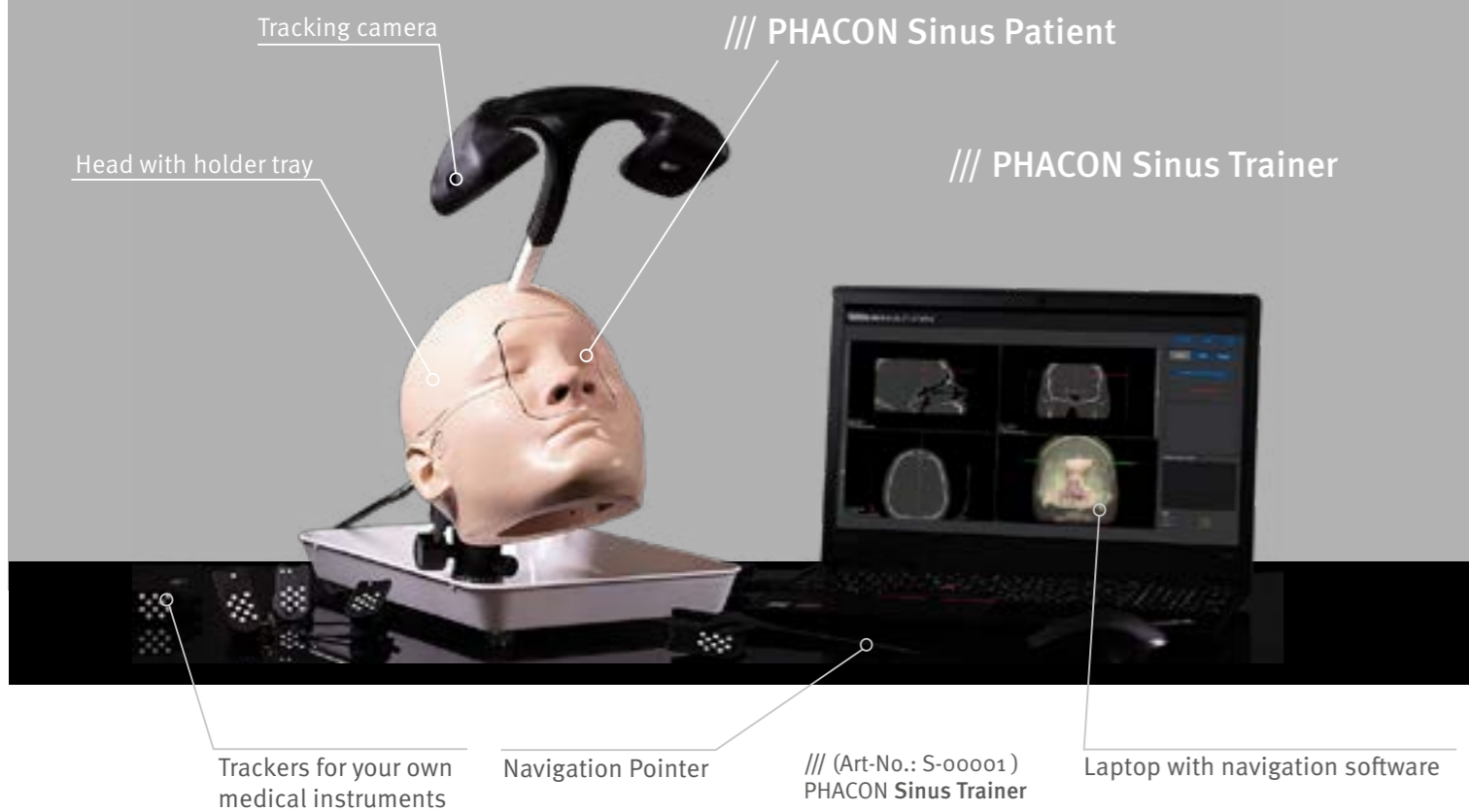
@ Copyright
All rights by PHACON GmbH

THE PATIENTS FOR YOUR SURGICAL DEMONSTRATION AND EDUCATION

SINUS TRAINER

PERFORM YOUR SURGICAL TRAINING UNDER REALISTIC CONDITIONS

The PHACON Sinus Trainer offers the possibility to train procedures such as functional endoscopic sinus surgery (FESS), transnasal and trans ethmoidal access to the pituitary gland, orbital decompression and decompression of the optic nerve. Surgical techniques with your regular instruments can be trained. At the same time, orientation within the related patient CT-data in the navigation software can be practiced. Injuries of risk structures during the training session are detected automatically by the help of the connected software. Perform your surgical training under realistic conditions.



VARIANTS

YOUR RIGHT PRODUCT PACKAGE FOR YOUR PERFECT PRESENTATION

PHACON provides a variety of different products and training options to fit your needs. Depending on your course set up or presentation, together we can find the right solutions to make your marketing and training the most successful event.



VARIANTS OF SINUS PATIENTS

PROPERTIES

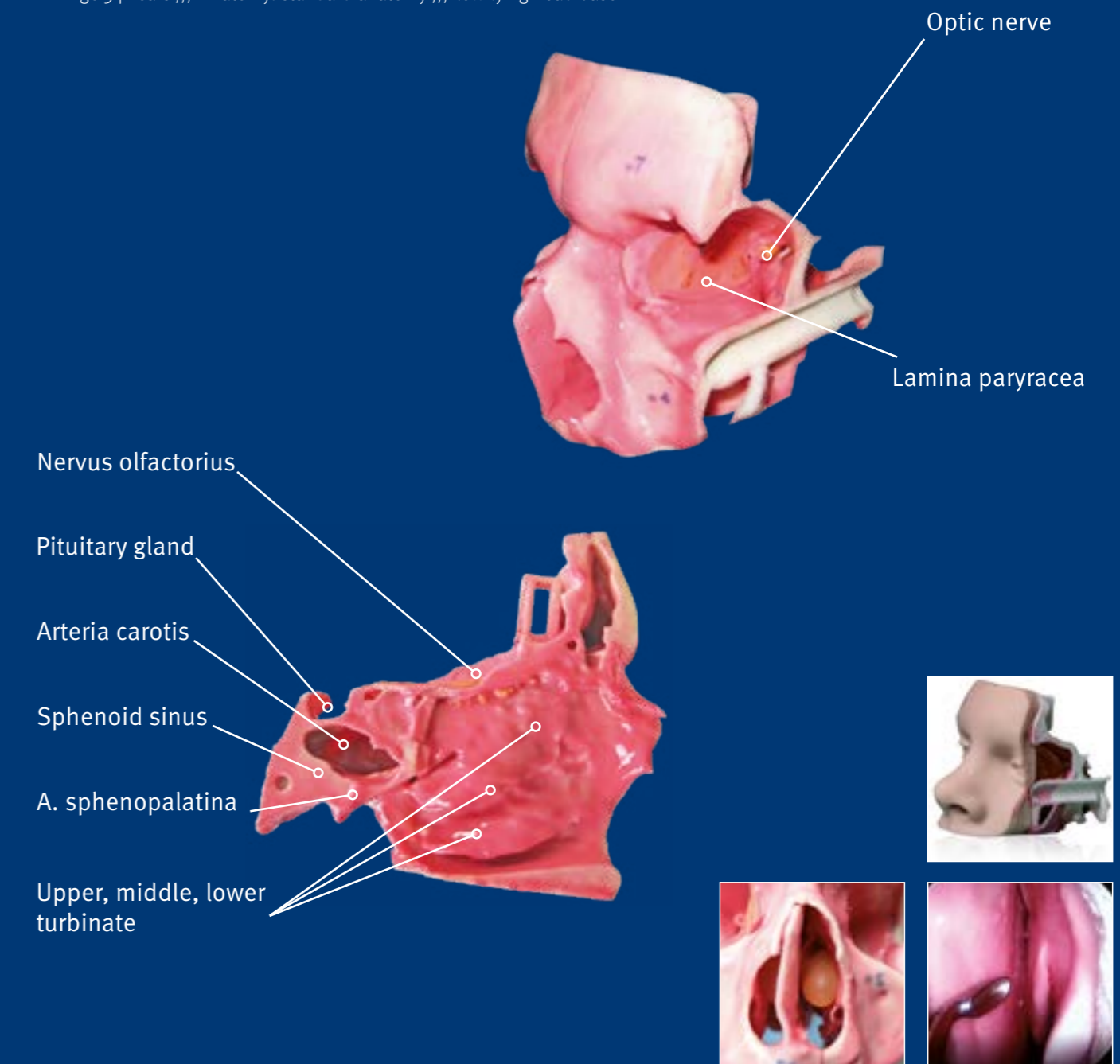
Bone similar material for realistic haptic /// Detailed ethmoid cells and frontal sinus /// Imitation of soft tissue (mucosa) /// Flexible turbinates /// Nervus opticus /// Pituitary gland /// Vessels e.g. Arteria carotis, A. sphenopalatina /// Important landmarks e.g., Processus uncinatus, Bulla ethmoidalis and others **available with** detectable risk structures, with Polyps, with representation of cranial brain, rhinoplasty, for marketing and training courses

PATIENT "MEYER" CHARACTERISTICS

Age 40 Years /// Anatomy: standard anatomy

PATIENT "SCHULZE" CHARACTERISTICS

Age 54 Years /// Anatomy: standard anatomy /// low-lying head base



THE TRAINER AND THE PATIENTS ARE CONCEPTUALIZED FOR THE TRAINING OF:

- Functional Endoscopic Sinus Surgery (FESS)
- Transnasal and transethmoidal access to the pituitary gland
- Orbital decompression
- Decompression of the optic nerve
- Septoplasty and rhinoplasty training
- Usage of endoscopy and navigation
- and more...



DISCOVER THE INTRODUCTION
IN OUR PHACON TRAINER



ORDER YOUR
PHACON SINUS TRAINER



ORDER YOUR
PHACON SINUS PATIENT

Electrical detection enables the detection of injuries of risk structures within the connected PHACON Trainer. When injured, an optic and acoustic signal appears in the navigation software. Detectable structures of the patient "Meyer" are: Nervus opticus, Carotis interna, Skull base, Lamina papyracea, pituitary gland